

MÉXICO, D.F. A 28 DE SEPTIEMBRE DE 2018

A QUIEN CORRESPONDA:

PRESENTE

A CONTINUACIÓN PRESENTAMOS A USTEDES EL INFORME FINAL RELATIVO A LOS RESULTADOS DE LA INSPECCIÓN REALIZADA EL 26 DE SEPTIEMBRE A LAS INSTALACIONES DEL PARTIDO ACCIÓN NACIONAL, UBICADAS EN EL SENADO DE LA REPÚBLICA DE LA CIUDAD DE MÉXICO, PARA LOS SERVICIOS DE TELEFONÍA Y COMUNICACIONES.

ASÍ MISMO, ADJUNTO A LA PRESENTE ENCONTRARÁ LAS CARACTERÍSTICAS DE LAS FRECUENCIAS AMISTOSAS ENCONTRADAS EN DICHA LOCALIDAD.

SE REVISARON LAS INSTALACIONES QUE COMPRENDEN:

- SALA DE JUNTAS
- OFICINA SECRETARIA
- OFICINA SENADOR DAMIÁN ZEPEDA V



DURANTE EL DESARROLLO DE LA REVISIÓN SE EFECTUARON LAS SIGUIENTES ACTIVIDADES:

1. REVISIÓN DE TODO EL ESPECTRO DE RADIO-FRECUENCIAS AÉREAS, ESPECTRO INFRARROJO AÉREO, LÍNEAS DE ALIMENTACIÓN DE VOLTAJE E INSTALACIÓN TELEFÓNICA LOCAL EN BUSCA DE TRANSMISIONES DE AUDIO Y/O VIDEO INALÁMBRICAS, CON EL SOPORTE DEL EQUIPO OSCOR MODELO OSC-5000.
2. REVISIÓN DEL ESPECTRO DE RADIO-FRECUENCIAS CON EL SOPORTE DEL EQUIPO OSCOR 5000.
3. VERIFICACIÓN DE LA INTEGRIDAD DEL MOBILIARIO, ESCRITORIOS, LÁMPARAS, ETC., EN BUSCA DE EVIDENCIA DE VIOLACIÓN A LOS MISMOS, A TRAVÉS DE LA REVISIÓN MANUAL Y OCULAR DE ELLOS.
4. INSPECCIÓN DE LOS ESPACIOS LIBRES ENTRE LOS FALSOS PLAFONES Y LOSAS DE CONCRETO, MEDIANTE REVISIÓN OCULAR.
5. BÚSQUEDA DE DISPOSITIVOS DE TRANSMISIÓN ALAMBRADOS INACTIVOS, EN MUEBLES, PAREDES HUECAS Y LIBREROS CON LA OPERACIÓN DEL EQUIPO NON LINEAR JUNCTION DETECTOR CAYMAN 402.
6. REVISIÓN A LOS APARATOS TELEFÓNICOS PARA SABER SI NO ERAN UTILIZADOS COMO ELEMENTO TRANSMISOR DE AUDIO, MÁS NO A LAS REDES DE LAS EXTENSIONES DE LOS SISTEMAS TELEFÓNICOS.



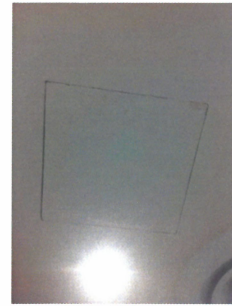
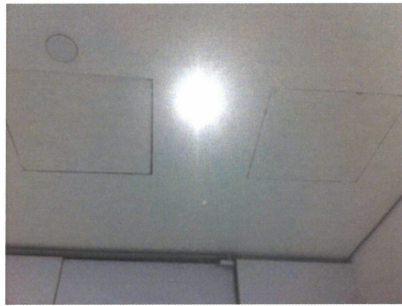
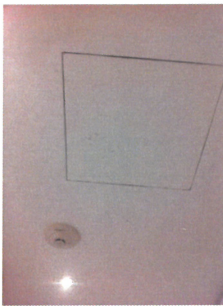
Resultados

- EN LA REVISIÓN NO SE ENCONTRARON DISPOSITIVOS ACTIVOS O INACTIVOS, ALAMBRADOS O INALÁMBRICOS DE TRANSMISIÓN DE AUDIO O VIDEO EN LAS ÁREAS AUDITADAS. (SE ADJUNTAN REPORTE DEL ESPECTRO RADIOLÓGICO DEL ÁREA).
- REVISIÓN Y SELLADO DE LOS CONTACTOS Y APAGADORES ELÉCTRICOS PARA ASEGURAR QUE NO TENGAN INSTALADOS DISPOSITIVOS ELECTRÓNICOS QUE UTILIZAN COMO MEDIO DE TRANSMISIÓN LA CORRIENTE ELÉCTRICA ALTERNA.
- REVISIÓN DEL MOBILIARIO PARA ASEGURAR QUE NO TENGAN INSTALADOS DISPOSITIVOS ELECTRÓNICOS DE VIGILANCIA ELECTRÓNICA.

➤ ANORMALIDADES ENCONTRADAS

SALA DE JUNTAS

- EN LOS MÓDULOS DE ACCESO AL INTERIOR DEL FALSO PLAFÓN, SE ENCUENTRAN MANCHADOS CON HUELLAS DE MANOS, RASTRO QUE PUDIERA CORRESPONDER A LA MANIPULACIÓN DE OBJETOS EN EL INTERIOR.



- EN EL INTERIOR SE ENCUENTRA UN CONTROL DE TEMPERATURA DEL AIRE ACONDICIONADO, POCO USUAL LA UTILIZACIÓN DE ESTE CONTROL EN EL INTERIOR DEL FALSO PLAFÓN.

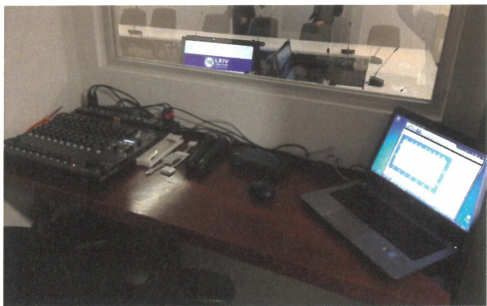
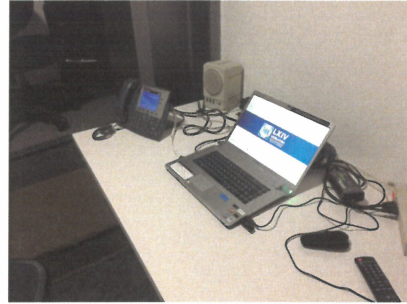
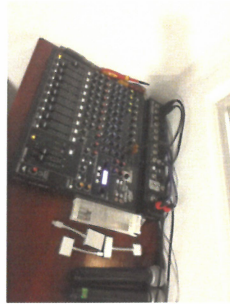


RECOMENDACIÓN: MANTENER REVISIONES PERIÓDICAS DE ESTA ZONA, MANTENER EN BUENAS CONDICIONES LOS MÓDULOS DE ACCESO AL INTERIOR DEL FALSO PLAFÓN , PARA DETERMINAR CUANDO OCURRA ALGÚN ACCESO AL INTERIOR DEL FALSO PLAFÓN.

- LOS MICRÓFONOS PUEDEN SER UN ELEMENTO DE COMUNICACIÓN POR LOS ALTOPARLANTES, PERO DEBERÁ CONSIDERARSE QUE PUEDEN ESTAR GRABANDO SIN CONSENTIMIENTO EN LA SALA DE CONTROL DE AUDIO.



- LA SALA CUENTA CON UNA CABINA DE AUDIO, EN LA CUAL SE DEBERÁ TENER GENTE DE CONFIANZA QUE ESTE OPERANDO AL EQUIPO DE AUDIO, SE PUEDEN ESTAR GENERANDO GRABACIONES EN ESTE SITIO, ASÍ COMO ESTABLECER LOS MEDIOS DE CONTROL DE ACCESO A LAS COMPUTADORAS QUE SE ENCUENTRAN EN LA CABINA.



A handwritten signature in blue ink, located in the bottom right corner of the page.

LISTADO DE SEÑALES DE SALA DE JUNTAS

Opened New Log file as C:\Users\SOGAMS\Desktop\servicios\Senado\Sala de Juntas PAN\OSCOR-1890-Log.rtf

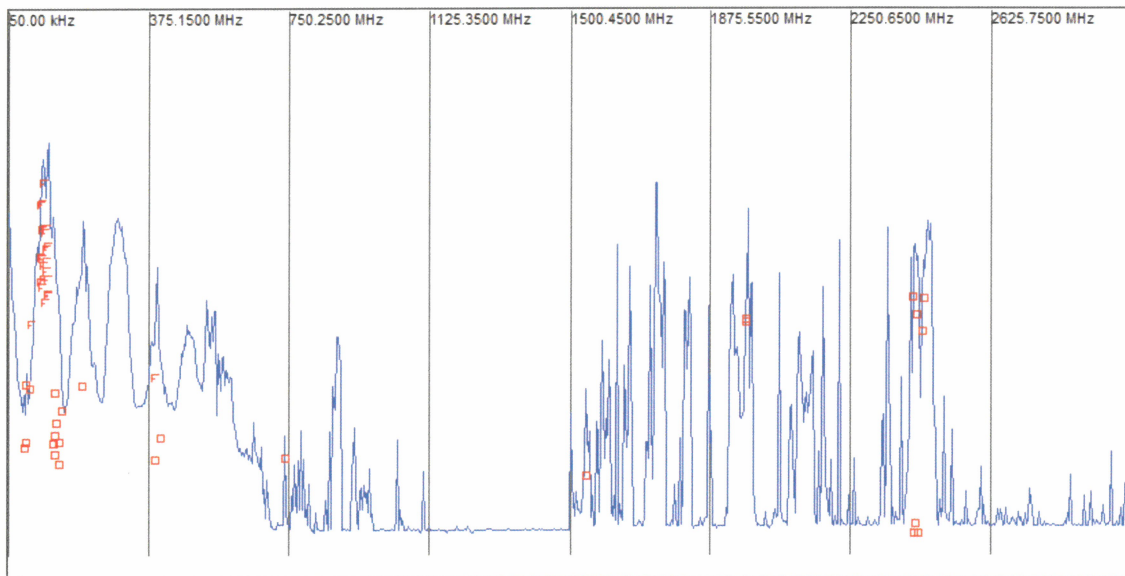
Input Changed to RF/Whip Hi

26/09/2018 12:09:00 p.m. Input Changed to RF/Loop
26/09/2018 12:09:00 p.m. Peak cycle count 0
26/09/2018 12:10:00 p.m. Input Changed to RF/Whip Lo
26/09/2018 12:10:00 p.m. Input Changed to RF/Whip Hi
26/09/2018 12:10:00 p.m. Correlating signal at 89.6750 MHz: Friendly
26/09/2018 12:11:00 p.m. Correlating signal at 92.0750 MHz: Friendly
26/09/2018 12:11:00 p.m. Correlating signal at 92.8750 MHz: Friendly
26/09/2018 12:11:00 p.m. Correlating signal at 97.6750 MHz: Friendly
26/09/2018 12:11:00 p.m. Correlating signal at 100.0750 MHz: Friendly
26/09/2018 12:14:00 p.m. Input Changed to RF/Discone
26/09/2018 12:14:00 p.m. Adding new signal at 1544.1750 MHz: No Corr
26/09/2018 12:14:00 p.m. Correlating signal at 1544.1750 MHz: Lo Threat (1)
26/09/2018 12:17:00 p.m. Adding new signal at 1970.8150 MHz: No Corr
26/09/2018 12:17:00 p.m. Correlating signal at 1970.8150 MHz: Lo Threat (1)
26/09/2018 12:17:00 p.m. Adding new signal at 1971.6050 MHz: No Corr
26/09/2018 12:17:00 p.m. Correlating signal at 1971.6050 MHz: Lo Threat (1)
26/09/2018 12:20:00 p.m. Adding new signal at 2420.5450 MHz: No Corr
26/09/2018 12:20:00 p.m. Correlating signal at 2420.5450 MHz: Lo Threat (1)
26/09/2018 12:20:00 p.m. Adding new signal at 2422.0250 MHz: No Corr
26/09/2018 12:20:00 p.m. Correlating signal at 2422.0250 MHz: Lo Threat (1)
26/09/2018 12:21:00 p.m. Adding new signal at 2428.0550 MHz: No Corr
26/09/2018 12:21:00 p.m. Correlating signal at 2428.0550 MHz: Lo Threat (1)
26/09/2018 12:21:00 p.m. Adding new signal at 2429.5050 MHz: No Corr
26/09/2018 12:21:00 p.m. Correlating signal at 2429.5050 MHz: Lo Threat (1)
26/09/2018 12:21:00 p.m. Adding new signal at 2432.6750 MHz: No Corr
26/09/2018 12:21:00 p.m. Correlating signal at 2432.6750 MHz: Lo Threat (1)
26/09/2018 12:22:00 p.m. Adding new signal at 2444.0150 MHz: No Corr
26/09/2018 12:22:00 p.m. Correlating signal at 2444.0150 MHz: Lo Threat (1)
26/09/2018 12:23:00 p.m. Adding new signal at 2447.2950 MHz: No Corr
26/09/2018 12:23:00 p.m. Correlating signal at 2447.2950 MHz: Lo Threat (1)
26/09/2018 12:26:00 p.m. Input Changed to Infrared
26/09/2018 12:26:00 p.m. Input Changed to AC VLF
26/09/2018 12:26:00 p.m. Input Changed to RF/Whip Hi
26/09/2018 12:27:00 p.m. Adding new signal at 43.9950 MHz: No Corr
26/09/2018 12:27:00 p.m. Adding new signal at 61.9850 MHz: Friendly
26/09/2018 12:27:00 p.m. Adding new signal at 88.0750 MHz: Friendly
26/09/2018 12:27:00 p.m. Adding new signal at 88.8850 MHz: Friendly
26/09/2018 12:27:00 p.m. Adding new signal at 89.6750 MHz: Friendly
26/09/2018 12:27:00 p.m. Adding new signal at 90.4750 MHz: Friendly
26/09/2018 12:27:00 p.m. Adding new signal at 92.0750 MHz: Friendly
26/09/2018 12:27:00 p.m. Adding new signal at 92.8750 MHz: Friendly
26/09/2018 12:27:00 p.m. Adding new signal at 93.6750 MHz: Friendly
26/09/2018 12:27:00 p.m. Adding new signal at 95.2850 MHz: Friendly
26/09/2018 12:27:00 p.m. Adding new signal at 96.8750 MHz: Friendly
26/09/2018 12:27:00 p.m. Adding new signal at 97.6750 MHz: Friendly
26/09/2018 12:27:00 p.m. Adding new signal at 98.4850 MHz: Friendly
26/09/2018 12:27:00 p.m. Adding new signal at 100.0750 MHz: Friendly
26/09/2018 12:27:00 p.m. Adding new signal at 100.8850 MHz: Friendly
26/09/2018 12:27:00 p.m. Adding new signal at 101.6850 MHz: Friendly
26/09/2018 12:27:00 p.m. Adding new signal at 102.4750 MHz: Friendly
26/09/2018 12:27:00 p.m. Adding new signal at 103.2750 MHz: Friendly
26/09/2018 12:27:00 p.m. Adding new signal at 104.0750 MHz: Friendly
26/09/2018 12:27:00 p.m. Adding new signal at 104.8850 MHz: Friendly
26/09/2018 12:27:00 p.m. Adding new signal at 105.6850 MHz: Friendly
26/09/2018 12:27:00 p.m. Adding new signal at 106.4750 MHz: Friendly
26/09/2018 12:27:00 p.m. Adding new signal at 107.8750 MHz: Friendly
26/09/2018 12:27:00 p.m. Adding new signal at 391.8350 MHz: Friendly
26/09/2018 12:27:00 p.m. Adding new signal at 1544.1750 MHz: Lo Threat (1)
26/09/2018 12:27:00 p.m. Adding new signal at 1970.8150 MHz: Lo Threat (1)
26/09/2018 12:27:00 p.m. Adding new signal at 1971.6050 MHz: Lo Threat (1)
26/09/2018 12:27:00 p.m. Adding new signal at 2420.5450 MHz: Lo Threat (1)
26/09/2018 12:27:00 p.m. Adding new signal at 2422.0250 MHz: Lo Threat (1)
26/09/2018 12:27:00 p.m. Adding new signal at 2428.0550 MHz: Lo Threat (1)
26/09/2018 12:27:00 p.m. Adding new signal at 2429.5050 MHz: Lo Threat (1)



27/09/2018 12:56:00 p.m. Correlating signal at 134.3050 MHz: Lo Threat (1)
 27/09/2018 12:56:00 p.m. Adding new signal at 143.9950 MHz: No Corr
 27/09/2018 12:56:00 p.m. Correlating signal at 143.9950 MHz: Lo Threat (1)
 27/09/2018 12:56:00 p.m. Adding new signal at 198.3050 MHz: No Corr
 27/09/2018 12:56:00 p.m. Correlating signal at 198.3050 MHz: Lo Threat (1)
 27/09/2018 12:57:00 p.m. Adding new signal at 391.0950 MHz: No Corr
 27/09/2018 12:57:00 p.m. Correlating signal at 391.0950 MHz: Lo Threat (1)
 27/09/2018 12:57:00 p.m. Adding new signal at 406.9150 MHz: No Corr
 27/09/2018 12:57:00 p.m. Correlating signal at 406.9150 MHz: Lo Threat (1)
 27/09/2018 12:58:00 p.m. Adding new signal at 742.4950 MHz: No Corr
 27/09/2018 12:58:00 p.m. Correlating signal at 742.4950 MHz: Lo Threat (1)
 27/09/2018 01:00:00 p.m. Input Changed to RF/Loop
 27/09/2018 01:00:00 p.m. Peak cycle count 1
 27/09/2018 01:00:00 p.m. Signal cycle count 1
 27/09/2018 01:00:00 p.m. Input Changed to RF/Whip Lo
27/09/2018 01:01:00 p.m. Auto mode stopped by user.
 27/09/2018 01:02:00 p.m. Input Changed to RF/Whip Hi
 27/09/2018 01:07:00 p.m. OSCOR Signal data erased.
 27/09/2018 01:12:00 p.m. Input Changed to RF/Discone
 27/09/2018 01:12:00 p.m. Input Changed to RF/Whip Hi
 27/09/2018 01:12:00 p.m. OSCOR Signal data erased.
 27/09/2018 01:15:00 p.m. Input Changed to RF/Discone
 27/09/2018 01:23:00 p.m. Input Changed to RF/Whip Hi
 27/09/2018 01:23:00 p.m. Input Changed to Infrared
 27/09/2018 01:24:00 p.m. Input Changed to AC VLF
 27/09/2018 01:25:00 p.m. Input Changed to RF/Discone
 27/09/2018 01:26:00 p.m. Input Changed to RF/Whip Hi
 27/09/2018 01:27:00 p.m. Input Changed to RF/Discone
 27/09/2018 01:28:00 p.m. Input Changed to RF/Whip Hi

GRÁFICA DE SEÑALES DE SALA DE JUNTAS



➤ **ANORMALIDADES ENCONTRADAS**

OFICINA SECRETARIA

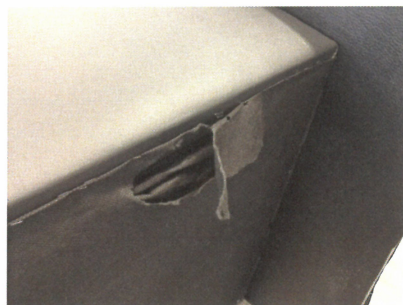
- EN EL INTERIOR DEL FALSO PLAFÓN SE ENCONTRO UNA CUBETA, BOCA ABAJO CUBRIENDO UNA TAPON DE LOS SISTEMAS DE ASPERSOR CONTRA INCENDIO. SE PUEDE UTILIZAR PARA OCULTAR CUALQUIER DISPOSITIVO ELECTRÓNICO DE MONITOREO.



- EN EL PISO SE ENCUENTRA UN CABLE SERIAL USB, EL CUAL PUEDE SER UTILIZADO PARA CONECTAR CUALQUIER DISPOSITIVO DE GRABACIÓN TIPO USB.



- EL FORRO INFERIOR DEL SILLON SE ENCUENTRA CON RASGADURAS, CON EL TAMAÑO SUFICIENTE PARA OCULTAR DISPOSITIVO ELECTRÓNICO DE GRABACIÓN DE AUDIO Y/O VIDEO.



SOGAMS, S.A. DE C.V.

- A TRAVÉS DE LA SALA DE JUNTAS, ANEXA A LA OFICINA, SE PUEDE TENER ACCESO DESDE EL EXTERIOR, Y SE PUEDE INSTALAR CUALQUIER DISPOSITIVO QUE PUEDA ESTAR MONITOREANDO O GRABANDO LAS ACTIVIDADES DE LA OFICINA SIN QUE SE DEN CUENTA DE ELLO. SE RECOMIENDA MANTENER EL ACCESO CONTROLADO A LA SALA.



A handwritten signature in blue ink, located in the lower right quadrant of the page. The signature is stylized and appears to be the initials 'JM'.

SOGAMS, S.A. DE C.V.

Manuel Ma. Contreras 107-B, Col. San Rafael, México D.F. C.P. 06470
Tel: (5255) 5507-2415 Fax: (5255) 5591-1352
E-mail: jpalacios@sogams.com.mx Web: www.sogams.com.mx



LISTADO DE SEÑALES DE OFICINA SECRETARIA

Opened New Log file as C:\Users\SOGAMS\Desktop\servicios\Senado\Nueva carpeta\OSCOR-1890-Log.rtf

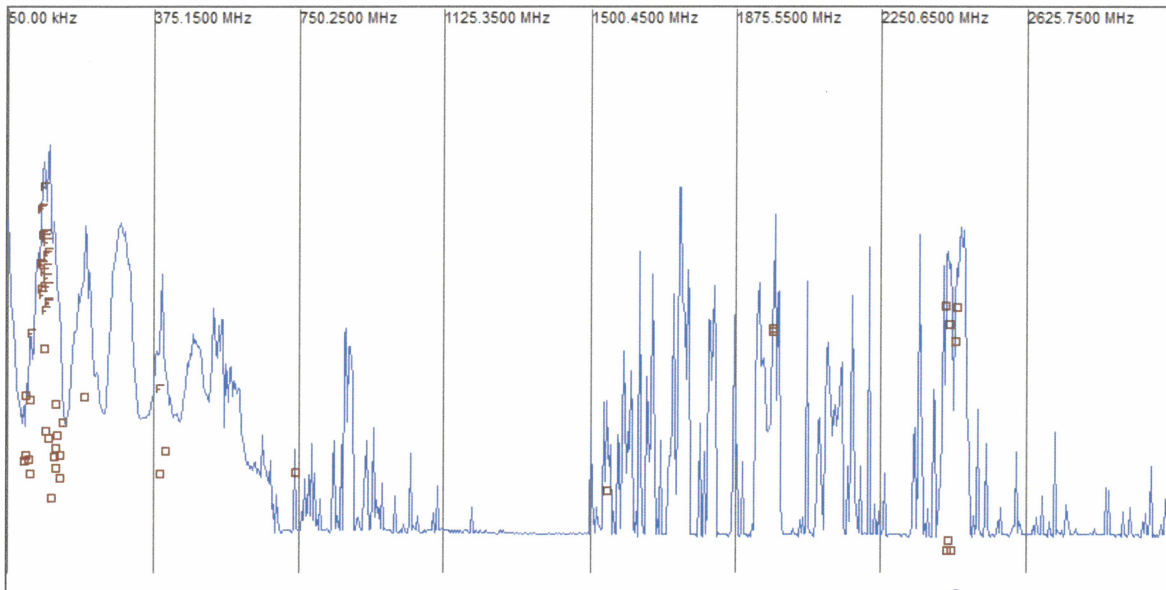
Input Changed to RF/Whip Hi
27/09/2018 01:59:00 p.m. Peak cycle count 0
27/09/2018 01:59:00 p.m. Signal cycle count 1
27/09/2018 01:59:00 p.m. Adding new signal at 55.9950 MHz: No Corr
27/09/2018 01:59:00 p.m. Correlating signal at 55.9950 MHz: Lo Threat
27/09/2018 01:59:00 p.m. Adding new signal at 57.9950 MHz: No Corr
27/09/2018 01:59:00 p.m. Correlating signal at 57.9950 MHz: Lo Threat
27/09/2018 01:59:00 p.m. Correlating signal at 61.9850 MHz: Friendly
27/09/2018 01:59:00 p.m. Correlating signal at 88.0750 MHz: Friendly
27/09/2018 02:00:00 p.m. Correlating signal at 89.6750 MHz: Friendly
27/09/2018 02:00:00 p.m. Correlating signal at 92.0750 MHz: Friendly
27/09/2018 02:00:00 p.m. Correlating signal at 92.8750 MHz: Friendly
27/09/2018 02:00:00 p.m. Correlating signal at 93.6750 MHz: Friendly
27/09/2018 02:00:00 p.m. Correlating signal at 95.2850 MHz: Friendly
27/09/2018 02:00:00 p.m. Adding new signal at 96.0850 MHz: No Corr
27/09/2018 02:00:00 p.m. Correlating signal at 96.0850 MHz: Lo Threat
27/09/2018 02:00:00 p.m. Correlating signal at 96.8750 MHz: Friendly
27/09/2018 02:01:00 p.m. Adding new signal at 99.2950 MHz: No Corr
27/09/2018 02:01:00 p.m. Correlating signal at 99.2950 MHz: Lo Threat
27/09/2018 02:01:00 p.m. Correlating signal at 100.0750 MHz: Friendly
27/09/2018 02:01:00 p.m. Correlating signal at 100.8850 MHz: Friendly
27/09/2018 02:01:00 p.m. Correlating signal at 101.6850 MHz: Friendly
27/09/2018 02:01:00 p.m. Correlating signal at 103.2750 MHz: Friendly
27/09/2018 02:01:00 p.m. Correlating signal at 104.0750 MHz: Friendly
27/09/2018 02:01:00 p.m. Adding new signal at 105.2950 MHz: No Corr
27/09/2018 02:01:00 p.m. Correlating signal at 105.2950 MHz: Lo Threat
27/09/2018 02:01:00 p.m. Correlating signal at 106.4750 MHz: Friendly
27/09/2018 02:02:00 p.m. Correlating signal at 107.2750 MHz: Friendly
27/09/2018 02:02:00 p.m. Correlating signal at 107.8750 MHz: Friendly
27/09/2018 02:02:00 p.m. Adding new signal at 111.9950 MHz: No Corr
27/09/2018 02:02:00 p.m. Correlating signal at 111.9950 MHz: Lo Threat
27/09/2018 02:04:00 p.m. Input Changed to RF/Loop
27/09/2018 02:04:00 p.m. Peak cycle count 1
27/09/2018 02:04:00 p.m. Signal cycle count 2
27/09/2018 02:04:00 p.m. Input Changed to RF/Whip Lo
27/09/2018 02:05:00 p.m. Input Changed to RF/Whip Hi
27/09/2018 02:05:00 p.m. Correlating signal at 92.0750 MHz: Friendly
27/09/2018 02:05:00 p.m. Correlating signal at 92.8750 MHz: Friendly
27/09/2018 02:05:00 p.m. Correlating signal at 95.2850 MHz: Friendly
27/09/2018 02:05:00 p.m. Correlating signal at 96.0850 MHz: Threat 2 (2)
27/09/2018 02:05:00 p.m. Correlating signal at 96.8750 MHz: Threat 2 (2)
27/09/2018 02:06:00 p.m. Correlating signal at 96.8750 MHz: Friendly
27/09/2018 02:06:00 p.m. Correlating signal at 100.0750 MHz: Friendly
27/09/2018 02:06:00 p.m. Correlating signal at 100.8850 MHz: Friendly
27/09/2018 02:06:00 p.m. Correlating signal at 101.6850 MHz: Friendly
27/09/2018 02:06:00 p.m. Correlating signal at 103.2750 MHz: Friendly
27/09/2018 02:06:00 p.m. Correlating signal at 104.0750 MHz: Friendly
27/09/2018 02:06:00 p.m. Correlating signal at 107.2750 MHz: Friendly
27/09/2018 02:09:00 p.m. Input Changed to RF/Discone
27/09/2018 02:12:00 p.m. Input Changed to Infrared
27/09/2018 02:13:00 p.m. Input Changed to AC VLF
27/09/2018 02:13:00 p.m. Input Changed to RF/Whip Hi
27/09/2018 02:13:00 p.m. Correlating signal at 92.0750 MHz: Friendly
27/09/2018 02:13:00 p.m. Correlating signal at 92.8750 MHz: Friendly
27/09/2018 02:14:00 p.m. Correlating signal at 93.6750 MHz: Friendly
27/09/2018 02:14:00 p.m. Correlating signal at 96.0850 MHz: Threat 2 (2)
27/09/2018 02:14:00 p.m. Correlating signal at 96.8750 MHz: Threat 2 (2)
27/09/2018 02:14:00 p.m. Correlating signal at 96.8750 MHz: Friendly
27/09/2018 02:14:00 p.m. Correlating signal at 100.0750 MHz: Friendly

SOGAMS, S.A. DE C.V.

Manuel Ma. Contreras 107-B, Col. San Rafael, México D.F. C.P. 06470
Tel: (5255) 5507-2415 Fax: (5255) 5591-1352
E-mail: jpalacios@sogams.com.mx Web: www.sogams.com.mx

27/09/2018 02:14:00 p.m. Correlating signal at 101.6850 MHz: Friendly
 27/09/2018 02:14:00 p.m. Correlating signal at 103.2750 MHz: Friendly
 27/09/2018 02:14:00 p.m. Correlating signal at 104.0750 MHz: Friendly
 27/09/2018 02:17:00 p.m. Input Changed to RF/Loop
 27/09/2018 02:17:00 p.m. Peak cycle count 2
 27/09/2018 02:17:00 p.m. Signal cycle count 3
 27/09/2018 02:17:00 p.m. Input Changed to RF/Whip Lo
 27/09/2018 02:17:00 p.m. Input Changed to RF/Whip Hi
 27/09/2018 02:18:00 p.m. Correlating signal at 88.0750 MHz: Friendly
 27/09/2018 02:18:00 p.m. Correlating signal at 92.0750 MHz: Friendly
 27/09/2018 02:18:00 p.m. Correlating signal at 92.8750 MHz: Friendly
 27/09/2018 02:18:00 p.m. Correlating signal at 96.0850 MHz: Threat 2 (2)
 27/09/2018 02:18:00 p.m. Correlating signal at 96.8750 MHz: Friendly
 27/09/2018 02:18:00 p.m. Correlating signal at 100.0750 MHz: Friendly
 27/09/2018 02:18:00 p.m. Correlating signal at 100.8850 MHz: Friendly
 27/09/2018 02:19:00 p.m. Correlating signal at 101.6850 MHz: Friendly
 27/09/2018 02:19:00 p.m. Correlating signal at 103.2750 MHz: Friendly
 27/09/2018 02:19:00 p.m. Correlating signal at 104.0750 MHz: Friendly
 27/09/2018 02:21:00 p.m. Input Changed to RF/Discone
 27/09/2018 02:25:00 p.m. Input Changed to Infrared
 27/09/2018 02:25:00 p.m. Input Changed to AC VLF
 27/09/2018 02:26:00 p.m. Input Changed to RF/Whip Hi
 27/09/2018 02:26:00 p.m. Correlating signal at 55.9950 MHz: Threat 2 (2)
 27/09/2018 02:26:00 p.m. Correlating signal at 55.9950 MHz: Threat 2 (2)
27/09/2018 02:26:00 p.m. Auto mode stopped by user.
 27/09/2018 02:46:00 p.m. Input Changed to RF/Discone
 27/09/2018 02:50:00 p.m. Input Changed to RF/Whip Hi
 27/09/2018 02:59:00 p.m. Input Changed to RF/Discone
 27/09/2018 03:01:00 p.m. Input Changed to AC VLF
 27/09/2018 03:02:00 p.m. Input Changed to RF/Loop

GRÁFICA DE SEÑALES DE OFICINA SECRETARIA

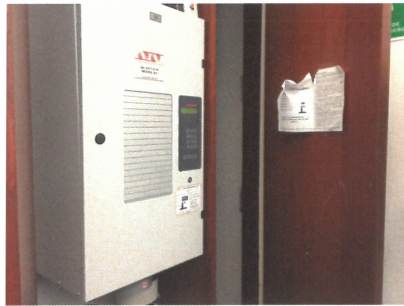



SOGAMS, S.A. DE C.V.

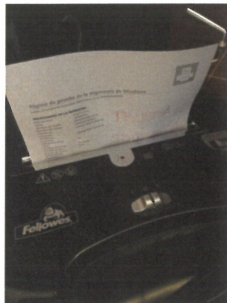
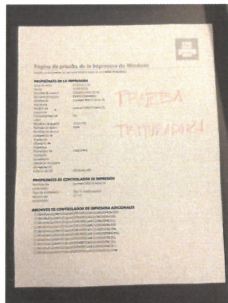
Manuel Ma. Contreras 107-B, Col. San Rafael, México D.F. C.P. 06470
 Tel: (5255) 5507-2415 Fax: (5255) 5591-1352
 E-mail: jpalacios@sogams.com.mx Web: www.sogams.com.mx

OFICINA SENADOR

- EN EL ÁREA SECREARIAL SE ENCUENTRA EL ÁREA DE DUCTOS, ÉSTE SE COMPARTE CON UNA OFICINA ANEXA A ÉSTA. LO QUE NOTA DE ÉSTA ÁREA ES QUE SE PUEDE ESCUCHAR LO QUE SE ESTÁ HABLANDO EN EL OTRO LADO DE LA OFICINA, Y RESPECTIVAMENTE EN EL OTRO LADO SE DEBE ESTAR ESCUCHANDO LO QUE SE ESTÁ HABLANDO EN EL INTERIOR DE LA OFICINA.



- LA TRITURADORA QUE SE ENCUENTRA EN LA OFICINA ES MEDIANAMENTE SEGURA, YA QUE LAS DIMENSIONES DEL CORTE, AÚN PERMITE LA RECONSTRUCCIÓN DEL DOCUMENTO. REMPLAZARLA POR UNA QUE SEA DE TIPO CONFETI.



- EL ANAQUEL DESTINADO PARA CONEXIONES ELÉCTRICAS, ES UN BUEN LUGAR PARA ESCONDER CUALQUIER DIPOSITIVO ELECTRÓNICO DE MONITOREO, ADEMÁS QUE SE PUEDE CONECTAR A LA ALIMENTACIÓN ELÉCTRICA DIRECTAMENTE, PASANDO DESAPERCIBIDO.



A handwritten signature in blue ink, appearing to be 'J. J. J.'

SOGAMS, S.A. DE C.V.



LISTADO DE SEÑALES DE OFICINA SENADOR

Opened New Log file as C:\Users\SOGAMS\Desktop\servicios\Senado\Oficina
SenZepeda\OSCOR-1890-Log.rtf

Input Changed to RF/Whip Hi

27/09/2018 03:30:00 p.m. Input Changed to RF/Whip Lo
27/09/2018 03:31:00 p.m. Input Changed to RF/Discone
27/09/2018 03:31:00 p.m. Input Changed to RF/Whip Lo
27/09/2018 03:31:00 p.m. Peak cycle count 0
27/09/2018 03:31:00 p.m. Friendly cycle count 0
27/09/2018 03:31:00 p.m. Signal cycle count 3
27/09/2018 03:32:00 p.m. Signal cycle count 0
27/09/2018 03:32:00 p.m. Adding new signal at 3.9946 MHz: No Corr
27/09/2018 03:32:00 p.m. Adding new signal at 43.9950 MHz: Lo Threat
27/09/2018 03:32:00 p.m. Adding new signal at 47.9850 MHz: Lo Threat
27/09/2018 03:32:00 p.m. Adding new signal at 48.3050 MHz: Lo Threat
27/09/2018 03:32:00 p.m. Adding new signal at 55.9950 MHz: Threat 2
27/09/2018 03:32:00 p.m. Adding new signal at 57.9950 MHz: Lo Threat
27/09/2018 03:32:00 p.m. Adding new signal at 59.9850 MHz: Lo Threat
27/09/2018 03:32:00 p.m. Adding new signal at 61.9850 MHz: Friendly
27/09/2018 03:32:00 p.m. Adding new signal at 88.0750 MHz: Friendly
27/09/2018 03:32:00 p.m. Adding new signal at 88.8850 MHz: Friendly
27/09/2018 03:32:00 p.m. Adding new signal at 89.6750 MHz: Friendly
27/09/2018 03:32:00 p.m. Adding new signal at 90.4750 MHz: Friendly
27/09/2018 03:32:00 p.m. Adding new signal at 91.2750 MHz: Friendly
27/09/2018 03:32:00 p.m. Adding new signal at 92.0750 MHz: Friendly
27/09/2018 03:32:00 p.m. Adding new signal at 92.8750 MHz: Friendly
27/09/2018 03:32:00 p.m. Adding new signal at 93.6750 MHz: Friendly
27/09/2018 03:32:00 p.m. Adding new signal at 95.2850 MHz: Friendly
27/09/2018 03:32:00 p.m. Adding new signal at 96.0850 MHz: Threat 2
27/09/2018 03:32:00 p.m. Adding new signal at 96.8750 MHz: Friendly
27/09/2018 03:32:00 p.m. Adding new signal at 97.6750 MHz: Friendly
27/09/2018 03:32:00 p.m. Adding new signal at 98.4850 MHz: Friendly
27/09/2018 03:32:00 p.m. Adding new signal at 99.2950 MHz: Lo Threat
27/09/2018 03:32:00 p.m. Adding new signal at 100.0750 MHz: Friendly
27/09/2018 03:32:00 p.m. Adding new signal at 100.8850 MHz: Friendly
27/09/2018 03:32:00 p.m. Adding new signal at 101.6850 MHz: Friendly
27/09/2018 03:32:00 p.m. Adding new signal at 102.4750 MHz: Friendly
27/09/2018 03:32:00 p.m. Adding new signal at 103.2750 MHz: Friendly
27/09/2018 03:32:00 p.m. Adding new signal at 104.0750 MHz: Friendly
27/09/2018 03:32:00 p.m. Adding new signal at 104.8850 MHz: Friendly
27/09/2018 03:32:00 p.m. Adding new signal at 105.2950 MHz: Lo Threat
27/09/2018 03:32:00 p.m. Adding new signal at 105.6850 MHz: Friendly
27/09/2018 03:32:00 p.m. Adding new signal at 106.4750 MHz: Friendly
27/09/2018 03:32:00 p.m. Adding new signal at 107.2750 MHz: Friendly
27/09/2018 03:32:00 p.m. Adding new signal at 107.8750 MHz: Friendly
27/09/2018 03:32:00 p.m. Adding new signal at 111.9950 MHz: Lo Threat
27/09/2018 03:32:00 p.m. Adding new signal at 121.2550 MHz: Lo Threat
27/09/2018 03:32:00 p.m. Adding new signal at 123.9850 MHz: Lo Threat
27/09/2018 03:32:00 p.m. Adding new signal at 124.2950 MHz: Lo Threat
27/09/2018 03:32:00 p.m. Adding new signal at 125.2350 MHz: Lo Threat
27/09/2018 03:32:00 p.m. Adding new signal at 127.9950 MHz: Lo Threat
27/09/2018 03:32:00 p.m. Adding new signal at 133.9850 MHz: Lo Threat
27/09/2018 03:32:00 p.m. Adding new signal at 134.3050 MHz: Lo Threat
27/09/2018 03:32:00 p.m. Adding new signal at 143.9950 MHz: Lo Threat
27/09/2018 03:32:00 p.m. Adding new signal at 198.3050 MHz: Lo Threat
27/09/2018 03:32:00 p.m. Adding new signal at 391.0950 MHz: Lo Threat
27/09/2018 03:32:00 p.m. Adding new signal at 391.8350 MHz: Friendly
27/09/2018 03:32:00 p.m. Adding new signal at 406.9150 MHz: Lo Threat
27/09/2018 03:32:00 p.m. Adding new signal at 742.4950 MHz: Lo Threat
27/09/2018 03:32:00 p.m. Adding new signal at 1544.1750 MHz: Lo Threat
27/09/2018 03:32:00 p.m. Adding new signal at 1970.8150 MHz: Lo Threat
27/09/2018 03:32:00 p.m. Adding new signal at 1971.6050 MHz: Lo Threat

SOGAMS, S.A. DE C.V.

Manuel Ma. Contreras 107-B, Col. San Rafael, México D.F. C.P. 06470
Tel: (5255) 5507-2415 Fax: (5255) 5591-1352
E-mail: jpalacios@sogams.com.mx Web: www.sogams.com.mx



27/09/2018 03:32:00 p.m. Adding new signal at 2420.5450 MHz: Lo Threat
27/09/2018 03:32:00 p.m. Adding new signal at 2422.0250 MHz: Lo Threat
27/09/2018 03:32:00 p.m. Adding new signal at 2428.0550 MHz: Lo Threat
27/09/2018 03:32:00 p.m. Adding new signal at 2429.5050 MHz: Lo Threat
27/09/2018 03:32:00 p.m. Adding new signal at 2432.6750 MHz: Lo Threat
27/09/2018 03:32:00 p.m. Adding new signal at 2444.0150 MHz: Lo Threat
27/09/2018 03:32:00 p.m. Adding new signal at 2447.2950 MHz: Lo Threat
27/09/2018 03:33:00 p.m. Adding new signal at 3.9946 MHz: Lo Threat
27/09/2018 03:33:00 p.m. Adding new signal at 43.9950 MHz: Lo Threat
27/09/2018 03:33:00 p.m. Adding new signal at 47.9850 MHz: Lo Threat
27/09/2018 03:33:00 p.m. Adding new signal at 48.3050 MHz: Lo Threat
27/09/2018 03:33:00 p.m. Adding new signal at 55.9950 MHz: Threat 2
27/09/2018 03:33:00 p.m. Adding new signal at 57.9950 MHz: Lo Threat
27/09/2018 03:33:00 p.m. Adding new signal at 59.9850 MHz: Lo Threat
27/09/2018 03:33:00 p.m. Adding new signal at 61.9850 MHz: Friendly
27/09/2018 03:33:00 p.m. Adding new signal at 88.0750 MHz: Friendly
27/09/2018 03:33:00 p.m. Adding new signal at 88.8850 MHz: Friendly
27/09/2018 03:33:00 p.m. Adding new signal at 89.6750 MHz: Friendly
27/09/2018 03:33:00 p.m. Adding new signal at 90.4750 MHz: Friendly
27/09/2018 03:33:00 p.m. Adding new signal at 91.2750 MHz: Friendly
27/09/2018 03:33:00 p.m. Adding new signal at 92.0750 MHz: Friendly
27/09/2018 03:33:00 p.m. Adding new signal at 92.8750 MHz: Friendly
27/09/2018 03:33:00 p.m. Adding new signal at 93.6750 MHz: Friendly
27/09/2018 03:33:00 p.m. Adding new signal at 95.2850 MHz: Friendly
27/09/2018 03:33:00 p.m. Adding new signal at 96.0850 MHz: Threat 2
27/09/2018 03:33:00 p.m. Adding new signal at 96.8750 MHz: Friendly
27/09/2018 03:33:00 p.m. Adding new signal at 97.6750 MHz: Friendly
27/09/2018 03:33:00 p.m. Adding new signal at 98.4850 MHz: Friendly
27/09/2018 03:33:00 p.m. Adding new signal at 99.2950 MHz: Lo Threat
27/09/2018 03:33:00 p.m. Adding new signal at 100.0750 MHz: Friendly
27/09/2018 03:33:00 p.m. Adding new signal at 100.8850 MHz: Friendly
27/09/2018 03:33:00 p.m. Adding new signal at 101.6850 MHz: Friendly
27/09/2018 03:33:00 p.m. Adding new signal at 102.4750 MHz: Friendly
27/09/2018 03:33:00 p.m. Adding new signal at 103.2750 MHz: Friendly
27/09/2018 03:33:00 p.m. Adding new signal at 104.0750 MHz: Friendly
27/09/2018 03:33:00 p.m. Adding new signal at 104.8850 MHz: Friendly
27/09/2018 03:33:00 p.m. Adding new signal at 105.2950 MHz: Lo Threat
27/09/2018 03:33:00 p.m. Adding new signal at 105.6850 MHz: Friendly
27/09/2018 03:33:00 p.m. Adding new signal at 106.4750 MHz: Friendly
27/09/2018 03:33:00 p.m. Adding new signal at 107.2750 MHz: Friendly
27/09/2018 03:33:00 p.m. Adding new signal at 107.8750 MHz: Friendly
27/09/2018 03:33:00 p.m. Adding new signal at 111.9950 MHz: Lo Threat
27/09/2018 03:33:00 p.m. Adding new signal at 121.2550 MHz: Lo Threat
27/09/2018 03:33:00 p.m. Adding new signal at 123.9850 MHz: Lo Threat
27/09/2018 03:33:00 p.m. Adding new signal at 124.2950 MHz: Lo Threat
27/09/2018 03:33:00 p.m. Adding new signal at 125.2350 MHz: Lo Threat
27/09/2018 03:33:00 p.m. Adding new signal at 127.9950 MHz: Lo Threat
27/09/2018 03:33:00 p.m. Adding new signal at 133.9850 MHz: Lo Threat
27/09/2018 03:33:00 p.m. Adding new signal at 134.3050 MHz: Lo Threat
27/09/2018 03:33:00 p.m. Adding new signal at 143.9950 MHz: Lo Threat
27/09/2018 03:33:00 p.m. Adding new signal at 198.3050 MHz: Lo Threat
27/09/2018 03:33:00 p.m. Adding new signal at 391.0950 MHz: Lo Threat
27/09/2018 03:33:00 p.m. Adding new signal at 391.8350 MHz: Friendly
27/09/2018 03:33:00 p.m. Adding new signal at 406.9150 MHz: Lo Threat
27/09/2018 03:33:00 p.m. Adding new signal at 742.4950 MHz: Lo Threat
27/09/2018 03:33:00 p.m. Adding new signal at 1544.1750 MHz: Lo Threat
27/09/2018 03:33:00 p.m. Adding new signal at 1970.8150 MHz: Lo Threat
27/09/2018 03:33:00 p.m. Adding new signal at 1971.6050 MHz: Lo Threat
27/09/2018 03:33:00 p.m. Adding new signal at 2420.5450 MHz: Lo Threat
27/09/2018 03:33:00 p.m. Adding new signal at 2422.0250 MHz: Lo Threat
27/09/2018 03:33:00 p.m. Adding new signal at 2428.0550 MHz: Lo Threat
27/09/2018 03:33:00 p.m. Adding new signal at 2429.5050 MHz: Lo Threat
27/09/2018 03:33:00 p.m. Adding new signal at 2432.6750 MHz: Lo Threat
27/09/2018 03:33:00 p.m. Adding new signal at 2444.0150 MHz: Lo Threat
27/09/2018 03:33:00 p.m. Adding new signal at 2447.2950 MHz: Lo Threat

SOGAMS, S.A. DE C.V.

Manuel Ma. Contreras 107-B, Col. San Rafael, México D.F. C.P. 06470
Tel: (5255) 5507-2415 Fax: (5255) 5591-1352
E-mail: jpalacios@sogams.com.mx Web: www.sogams.com.mx



27/09/2018 03:33:00 p.m. Adding new signal at 5.3236 MHz: No Corr
27/09/2018 03:33:00 p.m. Correlating signal at 5.3236 MHz: Lo Threat
27/09/2018 03:33:00 p.m. Adding new signal at 5.3274 MHz: No Corr
27/09/2018 03:33:00 p.m. Correlating signal at 5.3274 MHz: Lo Threat
27/09/2018 03:33:00 p.m. Input Changed to RF/Whip Hi
27/09/2018 03:34:00 p.m. Correlating signal at 88.0750 MHz: Friendly
27/09/2018 03:34:00 p.m. Correlating signal at 89.6750 MHz: Friendly
27/09/2018 03:34:00 p.m. Correlating signal at 91.2750 MHz: Friendly
27/09/2018 03:34:00 p.m. Correlating signal at 93.6750 MHz: Friendly
27/09/2018 03:35:00 p.m. Correlating signal at 95.2850 MHz: Friendly
27/09/2018 03:35:00 p.m. Correlating signal at 96.0850 MHz: Threat 2 (2)
27/09/2018 03:35:00 p.m. Correlating signal at 96.0850 MHz: Threat 2 (2)
27/09/2018 03:35:00 p.m. Correlating signal at 96.8750 MHz: Friendly
27/09/2018 03:35:00 p.m. Correlating signal at 97.6750 MHz: Friendly
27/09/2018 03:35:00 p.m. Correlating signal at 98.4850 MHz: Friendly
27/09/2018 03:35:00 p.m. Correlating signal at 99.2950 MHz: Threat 2 (2)
27/09/2018 03:35:00 p.m. Correlating signal at 99.2950 MHz: Threat 2 (2)
27/09/2018 03:35:00 p.m. Correlating signal at 100.0750 MHz: Friendly
27/09/2018 03:36:00 p.m. Correlating signal at 100.8850 MHz: Friendly
27/09/2018 03:36:00 p.m. Correlating signal at 101.6850 MHz: No Corr
27/09/2018 03:36:00 p.m. Correlating signal at 101.6850 MHz: Lo Threat
27/09/2018 03:36:00 p.m. Correlating signal at 102.4750 MHz: Friendly
27/09/2018 03:36:00 p.m. Correlating signal at 103.2750 MHz: Friendly
27/09/2018 03:36:00 p.m. Correlating signal at 104.0750 MHz: Friendly
27/09/2018 03:36:00 p.m. Correlating signal at 104.8850 MHz: Friendly
27/09/2018 03:36:00 p.m. Correlating signal at 105.2950 MHz: Threat 2 (2)
27/09/2018 03:36:00 p.m. Correlating signal at 105.2950 MHz: Threat 2 (2)
27/09/2018 03:36:00 p.m. Correlating signal at 105.6850 MHz: Friendly
27/09/2018 03:36:00 p.m. Correlating signal at 106.4750 MHz: Friendly
27/09/2018 03:37:00 p.m. Correlating signal at 107.2750 MHz: Friendly
27/09/2018 03:37:00 p.m. Correlating signal at 198.3050 MHz: Threat 2 (2)
27/09/2018 03:37:00 p.m. Correlating signal at 198.3050 MHz: Threat 2 (2)
27/09/2018 03:37:00 p.m. Adding new signal at 231.2250 MHz: No Corr
27/09/2018 03:37:00 p.m. Correlating signal at 231.2250 MHz: Lo Threat
27/09/2018 03:38:00 p.m. Adding new signal at 422.2950 MHz: No Corr
27/09/2018 03:38:00 p.m. Correlating signal at 422.2950 MHz: Lo Threat
27/09/2018 03:40:00 p.m. Input Changed to RF/Loop
27/09/2018 03:40:00 p.m. Peak cycle count 1
27/09/2018 03:40:00 p.m. Signal cycle count 1
27/09/2018 03:40:00 p.m. Input Changed to RF/Whip Lo
27/09/2018 03:41:00 p.m. Input Changed to RF/Whip Hi
27/09/2018 03:41:00 p.m. Correlating signal at 88.0750 MHz: Friendly
27/09/2018 03:41:00 p.m. Correlating signal at 88.8850 MHz: Friendly
27/09/2018 03:41:00 p.m. Correlating signal at 89.6750 MHz: Friendly
27/09/2018 03:41:00 p.m. Correlating signal at 92.0750 MHz: Friendly
27/09/2018 03:41:00 p.m. Correlating signal at 92.8750 MHz: Friendly
27/09/2018 03:42:00 p.m. Correlating signal at 95.2850 MHz: Friendly
27/09/2018 03:42:00 p.m. Correlating signal at 96.8750 MHz: Friendly
27/09/2018 03:42:00 p.m. Correlating signal at 99.2950 MHz: Threat 2 (2)
27/09/2018 03:42:00 p.m. Correlating signal at 100.8850 MHz: Friendly
27/09/2018 03:42:00 p.m. Correlating signal at 101.6850 MHz: Threat 2 (2)
27/09/2018 03:42:00 p.m. Correlating signal at 101.6850 MHz: Threat 2 (2)
27/09/2018 03:43:00 p.m. Correlating signal at 103.2750 MHz: Friendly
27/09/2018 03:43:00 p.m. Correlating signal at 104.0750 MHz: Friendly
27/09/2018 03:43:00 p.m. Correlating signal at 104.8850 MHz: Friendly
27/09/2018 03:45:00 p.m. Input Changed to RF/Discone
27/09/2018 03:48:00 p.m. Input Changed to Infrared
27/09/2018 03:48:00 p.m. Input Changed to AC VLF
27/09/2018 03:49:00 p.m. Input Changed to RF/Whip Lo
27/09/2018 03:50:00 p.m. Adding new signal at 3.9946 MHz: Threat 2
27/09/2018 03:50:00 p.m. Adding new signal at 5.3236 MHz: Lo Threat
27/09/2018 03:50:00 p.m. Adding new signal at 5.3274 MHz: Lo Threat
27/09/2018 03:50:00 p.m. Adding new signal at 43.9950 MHz: Lo Threat
27/09/2018 03:50:00 p.m. Adding new signal at 47.9850 MHz: Lo Threat
27/09/2018 03:50:00 p.m. Adding new signal at 48.3050 MHz: Lo Threat

SOGAMS, S.A. DE C.V.



27/09/2018 03:50:00 p.m. Adding new signal at 55.9950 MHz: Threat 2 (2)
27/09/2018 03:50:00 p.m. Adding new signal at 57.9950 MHz: Lo Threat
27/09/2018 03:50:00 p.m. Adding new signal at 59.9850 MHz: Lo Threat
27/09/2018 03:50:00 p.m. Adding new signal at 61.9850 MHz: Friendly
27/09/2018 03:50:00 p.m. Adding new signal at 88.0750 MHz: Friendly
27/09/2018 03:50:00 p.m. Adding new signal at 88.8850 MHz: Friendly
27/09/2018 03:50:00 p.m. Adding new signal at 89.6750 MHz: Friendly
27/09/2018 03:50:00 p.m. Adding new signal at 90.4750 MHz: Friendly
27/09/2018 03:50:00 p.m. Adding new signal at 91.2750 MHz: Friendly
27/09/2018 03:50:00 p.m. Adding new signal at 92.0750 MHz: Friendly
27/09/2018 03:50:00 p.m. Adding new signal at 92.8750 MHz: Friendly
27/09/2018 03:50:00 p.m. Adding new signal at 93.6750 MHz: Friendly
27/09/2018 03:50:00 p.m. Adding new signal at 95.2850 MHz: Friendly
27/09/2018 03:50:00 p.m. Adding new signal at 96.0850 MHz: Threat 2 (2)
27/09/2018 03:50:00 p.m. Adding new signal at 96.8750 MHz: Friendly
27/09/2018 03:50:00 p.m. Adding new signal at 97.6750 MHz: Friendly
27/09/2018 03:50:00 p.m. Adding new signal at 98.4850 MHz: Friendly
27/09/2018 03:50:00 p.m. Adding new signal at 99.2950 MHz: Threat 2 (2)
27/09/2018 03:50:00 p.m. Adding new signal at 100.0750 MHz: Friendly
27/09/2018 03:50:00 p.m. Adding new signal at 100.8850 MHz: Friendly
27/09/2018 03:50:00 p.m. Adding new signal at 101.6850 MHz: Threat 2 (2)
27/09/2018 03:50:00 p.m. Adding new signal at 102.4750 MHz: Friendly
27/09/2018 03:50:00 p.m. Adding new signal at 103.2750 MHz: Friendly
27/09/2018 03:50:00 p.m. Adding new signal at 104.0750 MHz: Friendly
27/09/2018 03:50:00 p.m. Adding new signal at 104.8850 MHz: Friendly
27/09/2018 03:50:00 p.m. Adding new signal at 105.2950 MHz: Threat 2 (2)
27/09/2018 03:50:00 p.m. Adding new signal at 105.6850 MHz: Friendly
27/09/2018 03:50:00 p.m. Adding new signal at 106.4750 MHz: Friendly
27/09/2018 03:50:00 p.m. Adding new signal at 107.2750 MHz: Friendly
27/09/2018 03:50:00 p.m. Adding new signal at 107.8750 MHz: Friendly
27/09/2018 03:50:00 p.m. Adding new signal at 111.9950 MHz: Lo Threat
27/09/2018 03:50:00 p.m. Adding new signal at 121.2550 MHz: Lo Threat
27/09/2018 03:50:00 p.m. Adding new signal at 123.9850 MHz: Lo Threat
27/09/2018 03:50:00 p.m. Adding new signal at 124.2950 MHz: Lo Threat
27/09/2018 03:50:00 p.m. Adding new signal at 125.2350 MHz: Lo Threat
27/09/2018 03:50:00 p.m. Adding new signal at 127.9950 MHz: Lo Threat
27/09/2018 03:50:00 p.m. Adding new signal at 133.9850 MHz: Lo Threat
27/09/2018 03:50:00 p.m. Adding new signal at 134.3050 MHz: Lo Threat
27/09/2018 03:50:00 p.m. Adding new signal at 143.9950 MHz: Lo Threat
27/09/2018 03:50:00 p.m. Adding new signal at 198.3050 MHz: Threat 2 (2)
27/09/2018 03:50:00 p.m. Adding new signal at 231.2250 MHz: Lo Threat
27/09/2018 03:50:00 p.m. Adding new signal at 391.0950 MHz: Lo Threat
27/09/2018 03:50:00 p.m. Adding new signal at 391.8350 MHz: Friendly
27/09/2018 03:50:00 p.m. Adding new signal at 406.9150 MHz: Lo Threat
27/09/2018 03:50:00 p.m. Adding new signal at 422.2950 MHz: Lo Threat
27/09/2018 03:50:00 p.m. Adding new signal at 742.4950 MHz: Lo Threat
27/09/2018 03:50:00 p.m. Adding new signal at 1544.1750 MHz: Lo Threat
27/09/2018 03:50:00 p.m. Adding new signal at 1970.8150 MHz: Lo Threat
27/09/2018 03:50:00 p.m. Adding new signal at 1971.6050 MHz: Lo Threat
27/09/2018 03:50:00 p.m. Adding new signal at 2420.5450 MHz: Lo Threat
27/09/2018 03:50:00 p.m. Adding new signal at 2422.0250 MHz: Lo Threat
27/09/2018 03:50:00 p.m. Adding new signal at 2428.0550 MHz: Lo Threat
27/09/2018 03:50:00 p.m. Adding new signal at 2429.5050 MHz: Lo Threat
27/09/2018 03:50:00 p.m. Adding new signal at 2432.6750 MHz: Lo Threat
27/09/2018 03:50:00 p.m. Adding new signal at 2444.0150 MHz: Lo Threat
27/09/2018 03:50:00 p.m. Adding new signal at 2447.2950 MHz: Lo Threat
27/09/2018 03:50:00 p.m. Adding new signal at 3.9946 MHz: Threat 2
27/09/2018 03:50:00 p.m. Adding new signal at 5.3236 MHz: Lo Threat
27/09/2018 03:50:00 p.m. Adding new signal at 5.3274 MHz: Lo Threat
27/09/2018 03:50:00 p.m. Adding new signal at 43.9950 MHz: Lo Threat
27/09/2018 03:50:00 p.m. Adding new signal at 47.9850 MHz: Lo Threat
27/09/2018 03:50:00 p.m. Adding new signal at 48.3050 MHz: Lo Threat
27/09/2018 03:50:00 p.m. Adding new signal at 55.9950 MHz: Threat 2 (2)
27/09/2018 03:50:00 p.m. Adding new signal at 57.9950 MHz: Lo Threat
27/09/2018 03:50:00 p.m. Adding new signal at 59.9850 MHz: Lo Threat

SOGAMS, S.A. DE C.V.



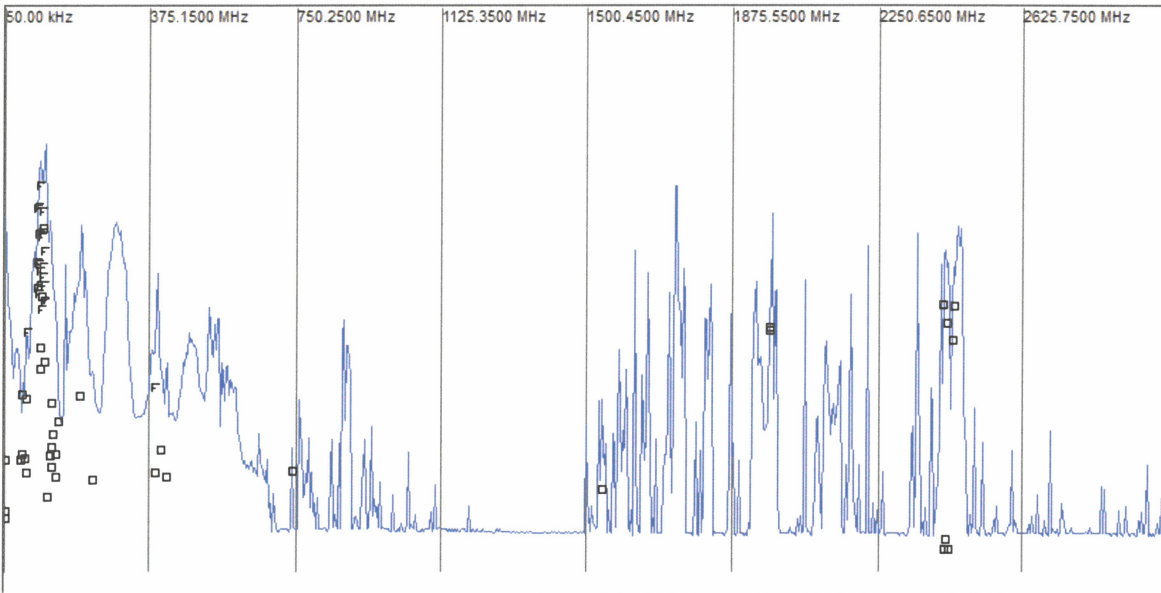
27/09/2018 03:50:00 p.m. Adding new signal at 61.9850 MHz: Friendly
27/09/2018 03:50:00 p.m. Adding new signal at 88.0750 MHz: Friendly
27/09/2018 03:50:00 p.m. Adding new signal at 88.8850 MHz: Friendly
27/09/2018 03:50:00 p.m. Adding new signal at 89.6750 MHz: Friendly
27/09/2018 03:50:00 p.m. Adding new signal at 90.4750 MHz: Friendly
27/09/2018 03:50:00 p.m. Adding new signal at 91.2750 MHz: Friendly
27/09/2018 03:50:00 p.m. Adding new signal at 92.0750 MHz: Friendly
27/09/2018 03:50:00 p.m. Adding new signal at 92.8750 MHz: Friendly
27/09/2018 03:50:00 p.m. Adding new signal at 93.6750 MHz: Friendly
27/09/2018 03:50:00 p.m. Adding new signal at 95.2850 MHz: Friendly
27/09/2018 03:50:00 p.m. Adding new signal at 96.0850 MHz: Threat 2 (2)
27/09/2018 03:50:00 p.m. Adding new signal at 96.8750 MHz: Friendly
27/09/2018 03:50:00 p.m. Adding new signal at 97.6750 MHz: Friendly
27/09/2018 03:50:00 p.m. Adding new signal at 98.4850 MHz: Friendly
27/09/2018 03:50:00 p.m. Adding new signal at 99.2950 MHz: Threat 2 (2)
27/09/2018 03:50:00 p.m. Adding new signal at 100.0750 MHz: Friendly
27/09/2018 03:50:00 p.m. Adding new signal at 100.8850 MHz: Friendly
27/09/2018 03:50:00 p.m. Adding new signal at 101.6850 MHz: Threat 2 (2)
27/09/2018 03:50:00 p.m. Adding new signal at 102.4750 MHz: Friendly
27/09/2018 03:50:00 p.m. Adding new signal at 103.2750 MHz: Friendly
27/09/2018 03:50:00 p.m. Adding new signal at 104.0750 MHz: Friendly
27/09/2018 03:50:00 p.m. Adding new signal at 104.8850 MHz: Friendly
27/09/2018 03:50:00 p.m. Adding new signal at 105.2950 MHz: Threat 2 (2)
27/09/2018 03:50:00 p.m. Adding new signal at 105.6850 MHz: Friendly
27/09/2018 03:50:00 p.m. Adding new signal at 106.4750 MHz: Friendly
27/09/2018 03:50:00 p.m. Adding new signal at 107.2750 MHz: Friendly
27/09/2018 03:50:00 p.m. Adding new signal at 107.8750 MHz: Friendly
27/09/2018 03:50:00 p.m. Adding new signal at 111.9950 MHz: Lo Threat
27/09/2018 03:50:00 p.m. Adding new signal at 121.2550 MHz: Lo Threat
27/09/2018 03:50:00 p.m. Adding new signal at 123.9850 MHz: Lo Threat
27/09/2018 03:50:00 p.m. Adding new signal at 124.2950 MHz: Lo Threat
27/09/2018 03:50:00 p.m. Adding new signal at 125.2350 MHz: Lo Threat
27/09/2018 03:50:00 p.m. Adding new signal at 127.9950 MHz: Lo Threat
27/09/2018 03:50:00 p.m. Adding new signal at 133.9850 MHz: Lo Threat
27/09/2018 03:50:00 p.m. Adding new signal at 134.3050 MHz: Lo Threat
27/09/2018 03:50:00 p.m. Adding new signal at 143.9950 MHz: Lo Threat
27/09/2018 03:50:00 p.m. Adding new signal at 198.3050 MHz: Threat 2 (2)
27/09/2018 03:50:00 p.m. Adding new signal at 231.2250 MHz: Lo Threat
27/09/2018 03:50:00 p.m. Adding new signal at 391.0950 MHz: Lo Threat
27/09/2018 03:50:00 p.m. Adding new signal at 391.8350 MHz: Friendly
27/09/2018 03:50:00 p.m. Adding new signal at 406.9150 MHz: Lo Threat
27/09/2018 03:50:00 p.m. Adding new signal at 422.2950 MHz: Lo Threat
27/09/2018 03:50:00 p.m. Adding new signal at 742.4950 MHz: Lo Threat
27/09/2018 03:50:00 p.m. Adding new signal at 1544.1750 MHz: Lo Threat
27/09/2018 03:50:00 p.m. Adding new signal at 1970.8150 MHz: Lo Threat
27/09/2018 03:50:00 p.m. Adding new signal at 1971.6050 MHz: Lo Threat
27/09/2018 03:50:00 p.m. Adding new signal at 2420.5450 MHz: Lo Threat
27/09/2018 03:50:00 p.m. Adding new signal at 2422.0250 MHz: Lo Threat
27/09/2018 03:50:00 p.m. Adding new signal at 2428.0550 MHz: Lo Threat
27/09/2018 03:50:00 p.m. Adding new signal at 2429.5050 MHz: Lo Threat
27/09/2018 03:50:00 p.m. Adding new signal at 2432.6750 MHz: Lo Threat
27/09/2018 03:50:00 p.m. Adding new signal at 2444.0150 MHz: Lo Threat
27/09/2018 03:50:00 p.m. Adding new signal at 2447.2950 MHz: Lo Threat
27/09/2018 03:50:00 p.m. Input Changed to RF/Whip Hi
27/09/2018 03:52:00 p.m. Correlating signal at 88.0750 MHz: Friendly
27/09/2018 03:52:00 p.m. Correlating signal at 89.6750 MHz: Friendly
27/09/2018 03:52:00 p.m. Correlating signal at 90.4750 MHz: Friendly
27/09/2018 03:52:00 p.m. Correlating signal at 91.2750 MHz: Friendly
27/09/2018 03:52:00 p.m. Correlating signal at 92.8750 MHz: Friendly
27/09/2018 03:53:00 p.m. Correlating signal at 93.6750 MHz: Friendly
27/09/2018 03:53:00 p.m. Adding new signal at 94.4350 MHz: No Corr
27/09/2018 03:53:00 p.m. Correlating signal at 94.4350 MHz: Lo Threat
27/09/2018 03:53:00 p.m. Correlating signal at 95.2850 MHz: Friendly
27/09/2018 03:53:00 p.m. Correlating signal at 96.8750 MHz: Friendly
27/09/2018 03:53:00 p.m. Correlating signal at 98.4850 MHz: Friendly

SOGAMS, S.A. DE C.V.

Manuel Ma. Contreras 107-B, Col. San Rafael, México D.F. C.P. 06470
Tel: (5255) 5507-2415 Fax: (5255) 5591-1352
E-mail: jpalacios@sogams.com.mx Web: www.sogams.com.mx

27/09/2018 03:53:00 p.m.	Correlating signal at 99.2950 MHz: Threat 2 (2)
27/09/2018 03:53:00 p.m.	Correlating signal at 99.2950 MHz: Threat 2 (2)
27/09/2018 03:54:00 p.m.	Correlating signal at 101.6850 MHz: Threat 2 (2)
27/09/2018 03:54:00 p.m.	Correlating signal at 101.6850 MHz: Threat 2 (2)
27/09/2018 03:54:00 p.m.	Correlating signal at 102.4750 MHz: Friendly
27/09/2018 03:54:00 p.m.	Correlating signal at 103.2750 MHz: Friendly
27/09/2018 03:54:00 p.m.	Correlating signal at 104.0750 MHz: Friendly
27/09/2018 03:54:00 p.m.	Correlating signal at 104.8850 MHz: Friendly
27/09/2018 03:54:00 p.m.	Correlating signal at 105.6850 MHz: Friendly
27/09/2018 03:54:00 p.m.	Correlating signal at 107.2750 MHz: Friendly
27/09/2018 03:55:00 p.m.	Correlating signal at 198.3050 MHz: Threat 2 (2)
27/09/2018 03:55:00 p.m.	Correlating signal at 198.3050 MHz: Threat 2 (2)
27/09/2018 03:56:00 p.m.	Correlating signal at 422.2950 MHz: Threat 2 (2)
27/09/2018 03:56:00 p.m.	Correlating signal at 422.2950 MHz: Threat 2 (2)
27/09/2018 03:58:00 p.m.	Input Changed to RF/Loop
27/09/2018 03:58:00 p.m.	Peak cycle count 2
27/09/2018 03:58:00 p.m.	Signal cycle count 2
27/09/2018 03:58:00 p.m.	Input Changed to RF/Whip Lo
	27/09/2018 03:59:00 p.m. Auto mode stopped by user.
27/09/2018 04:00:00 p.m.	Input Changed to RF/Whip Hi
27/09/2018 04:16:00 p.m.	Input Changed to RF/Discone

GRÁFICA DE SEÑALES DE OFICINA SENADOR



SOGAMS, S.A. DE C.V.

Manuel Ma. Contreras 107-B, Col. San Rafael, México D.F. C.P. 06470
 Tel: (5255) 5507-2415 Fax: (5255) 5591-1352
 E-mail: jpalacios@sogams.com.mx Web: www.sogams.com.mx



Descripción de la Gráfica de Señales

LA GRÁFICA MUESTRA LOS TRAZOS DE LAS SEÑALES DE RADIO FRECUENCIA QUE SE ENCUENTRAN PRESENTES EN EL LUGAR DE MUESTREO, LOS CUALES SON UNA REPRESENTACIÓN GRÁFICA DE LAS SEÑALES EXISTENTES EN EL ESPECTRO ELECTROMAGNÉTICO.

LAS SEÑALES ENCONTRADAS ESTÁN INDICADAS POR " " DENTRO DE LA GRÁFICA DEL ESPECTRO ELECTROMAGNÉTICO.

LOS TRAZOS CON UNA ALTURA MAYOR INDICAN QUE ESA SEÑAL TIENE UNA INTENSIDAD DE TRANSMISIÓN FUERTE, DE LA MISMA MANERA, LOS PICOS PEQUEÑOS SON SEÑALES CON UN NIVEL DE POTENCIA O INTENSIDAD DE LA SEÑAL BAJA O DÉBIL.

LAS SEÑALES INTENSAS NO NECESARIAMENTE SON ORIGINADAS EN EL INTERIOR DE LA OFICINA, LAS FUENTES SON EXTERNAS A LA OFICINA Y NO TIENEN RELACIÓN ALGUNA CON EL INTERIOR DE LA MISMA. ESTAS SEÑALES ESTÁN SIEMPRE PRESENTES EN CUALQUIER PUNTO DEL EDIFICIO, ASÍ COMO EN CUALQUIER PUNTO DE LA CIUDAD, ALGUNAS SEÑALES CAMBIARÁN EN INTENSIDAD PERO LA INFORMACIÓN Y CARACTERÍSTICAS SON SIEMPRE LAS MISMAS, DE AQUÍ SE DESPRENDE EL COMENTARIO O DESCRIPCIÓN DE **SEÑAL AMISTOSA**.

A handwritten signature in blue ink, consisting of several loops and a long tail, positioned to the right of the main text.

SOGAMS, S.A. DE C.V.

Manuel Ma. Contreras 107-B, Col. San Rafael, México D.F. C.P. 06470

Tel: (5255) 5507-2415 Fax: (5255) 5591-1352

E-mail: jpalacios@sogams.com.mx Web: www.sogams.com.mx



Resultado

- NO HAY EN LAS ÁREA AUDITADAS DISPOSITIVOS ELECTRÓNICOS DE VIGILANCIA DE AUDIO Y O VIDEO INSTALADOS.
- DE ACUERDO AL ANÁLISIS DE LA SEÑALES DE RADIO FRECUENCIA ENCONTRADAS EN EL INTERIOR DEL ÁREA AUDITADA, ÉSTAS CORRESPONDEN A SEÑALES DE COMUNICACIÓN COMERCIAL PÚBLICA Y PRIVADA CON ORIGEN EXTERNO AL EDIFICIO; SE ENCUENTRAN SIEMPRE EN LA MISMA POSICIÓN DE FRECUENCIA. LAS CUALES NO REPRESENTAN NINGÚN RIESGO EN LA INTEGRIDAD DE LA INFORMACIÓN DEL ÁREA AUDITADA.
- NO SE ENCONTRARON DISPOSITIVOS ACTIVOS O INACTIVOS, ALAMBRADOS O INALÁMBRICOS DE TRANSMISIÓN DE AUDIO O VIDEO EN LAS ÁREAS AUDITADAS.
- *SE ENCUENTRAN LIBRES DE DISPOSITIVOS ELECTRÓNICOS DE VIGILANCIA EL INTERIOR DE APAGADORES Y CONTACTOS ELÉCTRICOS, Y SELLADOS.*
- *EN GENERAL LA ÁREAS AUDITADAS SE ENCUENTRAN LIBRE DE DISPOSITIVOS DE MONITOREO.*

A handwritten signature in blue ink, consisting of a stylized, cursive script that is difficult to decipher but appears to be a personal name.

SOGAMS, S.A. DE C.V.

Manuel Ma. Contreras 107-B, Col. San Rafael, México D.F. C.P. 06470
Tel: (5255) 5507-2415 Fax: (5255) 5591-1352
E-mail: jpalacios@sogams.com.mx Web: www.sogams.com.mx

RECOMENDACIONES:

- ⊕ **PARA ASEGURAR LA “INTEGRIDAD” DE LAS INSTALACIONES ES NECESARIO REALIZAR INSPECCIONES PERIÓDICAS Y ESPECIALMENTE DURANTE EL DESARROLLO DE JUNTAS Y OPERACIONES CRÍTICAS QUE MANEJEN INFORMACIÓN CONFIDENCIAL.**
- ⊕ **EVITAR EL USO DE TELÉFONOS CONVENCIONALES PARA TRATAR TEMAS IMPORTANTES O SENSIBLES EN LA CONVERSACIÓN, DEBIDO A QUE SON MUY FÁCILES DE SER INTERVENIDOS. UTILIZAR SISTEMAS DE ENCRIPCIÓN PARA LA TELEFONÍA LOCAL (CONMUTADOR TELEFÓNICO) Y CELULAR.**
- ⊕ **LLEVAR UNA BITÁCORA DE TODA LA GENTE QUE ENTRA A LAS OFICINAS EN HORAS NO HÁBILES Y TENIENDO ESPECIAL CUIDADO CON PERSONAL DE MANTENIMIENTO, SERVICIOS GENERALES O DE CUALQUIER OTRA PERSONA QUE LLEVE ESCALERA Y /O HERRAMIENTAS, ASI COMO MANTENERLOS EN VIGILANCIA A DISTANCIA DE LAS ACTIVIDADES QUE LLEVAN A CABO EN EL LUGAR.**
- ⊕ **PARA PROVENIR FUGAS DE AUDIO, EL USO DE MÚSICA AMBIENTAL AYUDA, SIN EMBARGO, PARA QUE SEA MÁS EFICIENTE SE RECOMIENDA QUE LA FUENTE SONORA (BOCINAS) SE LOCALICE CERCA DE LAS PAREDES Y VENTANAS Y NO ASI CERCA DE LOS INTERLOCUTORES DENTRO DE UNA OFICINA.**
- ⊕ **MANTENER LAS OFICINAS LIBRES DE CABLES Y ROSETAS TELEFÓNICAS INNECESARIAS YA QUE ESTAS SE PODRÍAN UTILIZAR PARA ESCONDER O CONECTAR ALGÚN DISPOSITIVO.**
- ⊕ **REMOVER TODOS LOS CABLES NO UTILIZADOS.**
- ⊕ **LOS TELÉFONOS DE LA RED DEL CONMUTADOR PROPIO, NO SON DEL TODO SEGUROS, SON VULNERABLES SI SE INTERCEPTAN LAS TRONCALES DESDE AFUERA.**
 - **ALTERNATIVAS:**
 - **ENCRIPCIÓN DE LAS LÍNEAS CRÍTICAS TANTO FIJAS COMO CELULARES.**
 - **EN EL CASO DE USO DE TELÉFONOS CELULARES, LOS MAS SEGUROS SON:**
 - **TELEFONÍA EN TECNOLOGÍA 4G “LTE”, ASEGURANDE QUE NO CAMBIE A GSM O DIGITAL DEBIDO A LA DISPONIBILIDAD DE ENLACE DE LA COMPAÑIA QUE PROPORCIONA EL SERVICIO.**
- ⊕ **SE RECOMIENDA LA INSTALACIÓN DE SISTEMAS DE BLOQUEO DE CELULARES CON LA POTENCIA DE TRANSMISIÓN ADECUADA AL ÁREA A PROTEGER, PARA PREVENIR EL USO DEL TELEFONO CELULAR EN REUNIONES IMPORTANTES.**
- ⊕ **DEBEN SER INSPECCIONADOS MACETAS, CAJAS DE PAÑUELOS DESECHABLES, LÁMPARAS, CUADROS Y ADORNOS CADA VEZ QUE SEA POSIBLE.**
- ⊕ **LOS REGALOS RECIBIDOS DEBEN SER INSPECCIONADOS ANTES DE ALMACENARLOS O COLORCARLOS EN LA OFICINA, PARA VERIFICAR QUE NO TENGAN DISPOSITIVOS ELECTRÓNICOS DE MONITOREO DE AUDIO Y/O VIDEO.**
- ⊕ **LAS COMPUTADORAS DE ESCRITORIO Y LAPTOP DEBEN TENER “PASSWORD” DE ACCESO Y PROTECTOR DE PANTALLA CON “PASSWORD” Y APAGARSE CUANDO NO ESTÉN EN USO.**
- ⊕ **LOS MINI COMPONENTES, CONTROLES REMOTOS Y TELÉFONOS, DEBEN SER REVISADOS, MARCADOS Y SELLADOS PARA EVITAR UN POSIBLE CAMBIO POR OTRO “ALTERADO” O QUE SEAN ABIERTOS PARA MODIFICARLOS O INSTALARLES ALGO. ESTO SE APLICA TAMBIÉN PARA LOS APAGADORES Y CLAVIJAS DE LUZ Y MUY ESPECIALMENTE PARA LAS BARRAS MULTICONTACTOS Y NO BREAKS.**

SOGAMS, S.A. DE C.V.

Manuel Ma. Contreras 107-B, Col. San Rafael, México D.F. C.P. 06470
Tel: (5255) 5507-2415 Fax: (5255) 5591-1352
E-mail: jpalacios@sogams.com.mx Web: www.sogams.com.mx





LAS ANTERIORES SON MEDIDAS BÁSICAS DE PREVENCIÓN, HAY MUCHAS MÁS QUE SE PUEDEN REALIZAR DEPENDIENDO DE LAS ACTIVIDADES, INSTALACIONES Y SITUACIONES ESPECÍFICAS QUE USTEDS TENGAN. ESTAMOS A SUS ÓRDENES PARA ASESORARLO CON ACCIONES Y EQUIPO QUE CUBRAN SUS NECESIDADES DE SEGURIDAD. SI NECESITA UNA EXPLICACIÓN MAS DETALLADA DE LAS ACTIVIDADES REALIZADAS O DE LAS LISTAS ANEXAS LE RUEGO SE PONGA EN CONTACTO CON UN SERVIDOR PARA CONCERTAR UNA CITA.

SIN MÁS POR EL MOMENTO, AGRADEZCO SU ATENCIÓN A LA PRESENTE Y QUEDO DE USTED PARA CUALQUIER DUDA O ACLARACIÓN.

ATENTAMENTE

A handwritten signature in blue ink, appearing to read "Jorge Palacios Noriega". The signature is stylized and somewhat abstract, with a long horizontal stroke extending to the right.

JORGE PALACIOS NORIEGA
CEO Y VP VENTAS
SOGAMS, S. A. DE C. V.

SOGAMS, S.A. DE C.V.

Manuel Ma. Contreras 107-B, Col. San Rafael, México D.F. C.P. 06470
Tel: (5255) 5507-2415 Fax: (5255) 5591-1352
E-mail: jpalacios@sogams.com.mx Web: www.sogams.com.mx